



Infor Distribution FACTS 7.9.0 External Warehouse Management System Integration Guide

Accellos 6.4

Copyright © 2014 Infor

Important Notices

The material contained in this publication (including any supplementary information) constitutes and contains confidential and proprietary information of Infor.

By gaining access to the attached, you acknowledge and agree that the material (including any modification, translation or adaptation of the material) and all copyright, trade secrets and all other right, title and interest therein, are the sole property of Infor and that you shall not gain right, title or interest in the material (including any modification, translation or adaptation of the material) by virtue of your review thereof other than the non-exclusive right to use the material solely in connection with and the furtherance of your license and use of software made available to your company from Infor pursuant to a separate agreement, the terms of which separate agreement shall govern your use of this material and all supplemental related materials ("Purpose").

In addition, by accessing the enclosed material, you acknowledge and agree that you are required to maintain such material in strict confidence and that your use of such material is limited to the Purpose described above. Although Infor has taken due care to ensure that the material included in this publication is accurate and complete, Infor cannot warrant that the information contained in this publication is complete, does not contain typographical or other errors, or will meet your specific requirements. As such, Infor does not assume and hereby disclaims all liability, consequential or otherwise, for any loss or damage to any person or entity which is caused by or relates to errors or omissions in this publication (including any supplementary information), whether such errors or omissions result from negligence, accident or any other cause.

Without limitation, U.S. export control laws and other applicable export and import laws govern your use of this material and you will neither export or re-export, directly or indirectly, this material nor any related materials or supplemental information in violation of such laws, or use such materials for any purpose prohibited by such laws.

Trademark Acknowledgements

The word and design marks set forth herein are trademarks and/or registered trademarks of Infor and/or related affiliates and subsidiaries. All rights reserved. All other company, product, trade or service names referenced may be registered trademarks or trademarks of their respective owners.

Publication Information

Release: Infor Distribution FACTS 7.9.0

Publication date: October 28, 2014

Contents

- About this guide** 5
 - Intended audience..... 5
 - Related documents 5
 - Contacting Infor..... 5
- Introduction** 7
 - Process Overview 7
 - Restrictions and Limitations 8
 - Multiple Companies 8
 - Item Number Size 8
 - Fractional Quantities 8
 - Unsupported FACTS Modules (the WMS interface cannot be used for a FACTS company that utilizes any of these modules) 8
 - Unsupported FACTS Document Types/Functionality for an EWMS managed warehouse (in warehouses which utilize WMS, these FACTS features cannot be used)..... 8
 - Known Scenario Restrictions 9
 - Supported Transaction Types 9
 - Definitions 10
 - Preliminary Steps 10
- Setup Information** 11
 - Setting up Accellos..... 11
 - Setting up FACTS 16
 - Configuring EWMS in FACTS 16
 - System Startup 23
 - Create Item Download 23
 - PO, SO, Transfers or CRS Download..... 23
 - Standard Part Numbers 23
 - Import Locations 23

About this guide

This guide describes how the third-party FACTS External Warehouse Management System (EWMS), Accellos is integrated to Infor Distribution FACTS.

Intended audience

This manual is designed with the FACTS Channel Partner and FACTS Implementation Consultant in mind. *This is a technical manual*, and it is not intended for the end user.

Related documents

You can find the documents in the product documentation section of the Infor Xtreme Support portal, as described in "Contacting Infor" on page 5.

For information about other Infor Distribution FACTS modules or basic usage information, see the other users guides in the Infor Distribution FACTS PDF Library. Access these documents from the bookmarks of this document: FACTSDocNavigation.pdf.

Contacting Infor

If you have questions about Infor products, go to the Infor Xtreme Support portal at www.inforxtreme.com.

If we update this document after the product release, we will post the new version on this Web site. We recommend that you check this Web site periodically for updated documentation.

If you have comments about Infor documentation, contact documentation@infor.com.

Introduction

This guide describes the steps needed to implement the third-party FACTS External Warehouse Management System (EWMS), Accellos.

It covers the steps necessary to set up Accellos and the optional FACTS EW module.

All processes that affect item quantities (placing an order, inventory adjustments, etc.) are handled by EWMS and communicated to FACTS via ASCII files. Any FACTS operations that affect item quantities are automated to communicate to EWMS via ASCII files.

Process Overview

- 1 From a FACTS operation (printing a pick ticket, etc), an output ASCII file is created (in a specified directory) for download to EWMS.
- 2 EWMS picks up the ASCII file for download into the EWMS system.
- 3 Steps carried out in EWMS create ASCII files of various *types (XC, PC, RC, SC, MT, etc) for upload to FACTS. Some steps in the EWMS, such as a stock count, are not initiated by a FACTS ASCII file but by EWMS and will create an ASCII file to upload to FACTS.
- 4 In FACTS, running 'Upload Records' reads the ascii files that were uploaded by EWMS to FACTS.
 - Data from the ASCII files is put into holding files (EWPICK, EWRECV, EWMISC, EWCYCL, etc).
 - The ASCII files are then archived in the indicated FACTS archive folder.
- 5 Once all the EWMS upload ASCII files have been read/archived then the holding files are used to update the appropriate FACTS files (SORSOH/L, PORPOH/L, etc), removing records from the holding files as they are processed. (Records may not process out of the holding files if issues arise; normally the holding files will be empty.)

*One type of upload ASCII file "XC" is used to indicate the status of FACTS records as EWMS manages the related items – the involved FACTS files are EWLEDG and EWLEDT. Setting/status within these ledger files control whether a FACTS user can access certain records (depending upon the selected item(s) current state in EWMS).

Restrictions and Limitations

Known restrictions and limitations for the FACTS/Accellos integration are listed in this section.

Multiple Companies

Each FACTS company must have a separate instance of Accellos.

Item Number Size

Item numbers may not exceed 20 characters.

Fractional Quantities

Quantities can only be an integer values (whole number).

Unsupported FACTS Modules (the WMS interface cannot be used for a FACTS company that utilizes any of these modules)

- Electronic Data Interchange (EDI)
- Job Costing
- Service and Repair

Unsupported FACTS Document Types/Functionality for an EWMS managed warehouse (in warehouses which utilize WMS, these FACTS features cannot be used)

- Counter Sales
- Direct Invoices
- Recurring Invoices
- Item Repackaging
- Quick Transfer
- Adjustments, Credit Memo, and Non-Purchase Order Receipts with quantities that do not cancel out to zero for any specific warehouse and item
 - These transactions can be used to adjust cost by reducing and increasing inventory by the same amount with different costs, but the quantities must offset such that there is no net changes to inventory quantities.
- Adjustment IN of LOT items that are not already on file in FACTS
 - i.e. Adjustments cannot be used to create new lot numbers
- Adjustment IN of SERIAL items is never allowed
- Manufacturing Formulation
- Manufacturing Production with serial/lot items

-
- serialized/lotted finished items nor serialized/lotted component items are allowed.
 - Negative Production
 - i.e. MC production tickets with negative quantities for components or finished items are not allowed.
 - Assignment of serial/lot numbers at Order Entry (an option in SO Static Control F/M) with on-the-fly (OTF) bills of materials (BOMs). (Refer to the 1st Known Scenario Restriction in the next section for details.)
 - Processing serial/lot transactions must be in the proper sequence.
 - Receipts must be processed prior to shipments.
 - In MC Production, listing the same item more than one time as a component or as a single finished item.
 - A component item can't be duplicated on the same finished item.

Known Scenario Restrictions

There are a few “known scenarios” that have limitations in their processing:

- For Kitting (On the Fly Bill of Materials) with serial/lot items, if the serial/lot number is assigned during Order Entry, FACTS does not send the serial/lot number to Accellos at this time.
- When processing a receipt of a serialized item and using the item on a Sales Order (or other document) in Accellos, performing the outbound confirmation prior to the inbound receipt will create a hard error in PO Receipt Entry (POE210).
- For Manufacturing Production, the use of an item in the components listing more than once is not supported at this time.

Supported Transaction Types

Within the stated restrictions and limitations above, the supported transactions for the EWMS interface are:

- Transfers
- Purchase Orders
 - Negative Purchase Orders (Vendor Returns)
- Sales Orders
 - Negative Sales Orders
 - On-the-Fly Bill of Materials (Kitting)
- CRS Documents
- Adjustments
- Physical Inventory / Cycle Counting
- Manufacturing Production (Bill of Materials)

Definitions

Upload – data coming to FACTS

Download – data going to EWMS

Preliminary Steps

- 1 Install FACTS.
- 2 Install Accellos. Follow the Accellos Setup/Installation Guidelines.
- 3 Choose one:
 - a Select a file transfer program to use to transfer download files (from the FACTS server's download directory) to the EWMS server download directory and to transfer upload files (from EWMS server's upload directory) to the FACTS server upload directory. In this case it makes sense to create the FACTS upload and download directories on the same server where FACTS is located.
 - b It is possible to enter, in FACTS WMS Control F/M (EWF990), the path to the EWMS server and directory as the download location where FACTS places its created ascii files, and, to enter in FACTS file maintenance the upload path from which upload ascii files created by EWMS can be retrieved; however, there is risk of a file transferred between servers in this fashion becoming corrupt or lost in transit.
 - c The FACTS files can be moved manually to the EWMS directory. Likewise, moving the EWMS files to the FACTS directory can also be done manually. This is not recommended as time sensitive information may need to be communicated between the two applications to prevent item/stock errors. However, as a means of testing the creation of appropriate files/data this might be preferable initially but should be changed to option a or b (above) when satisfactory file creation/movement has been achieved.

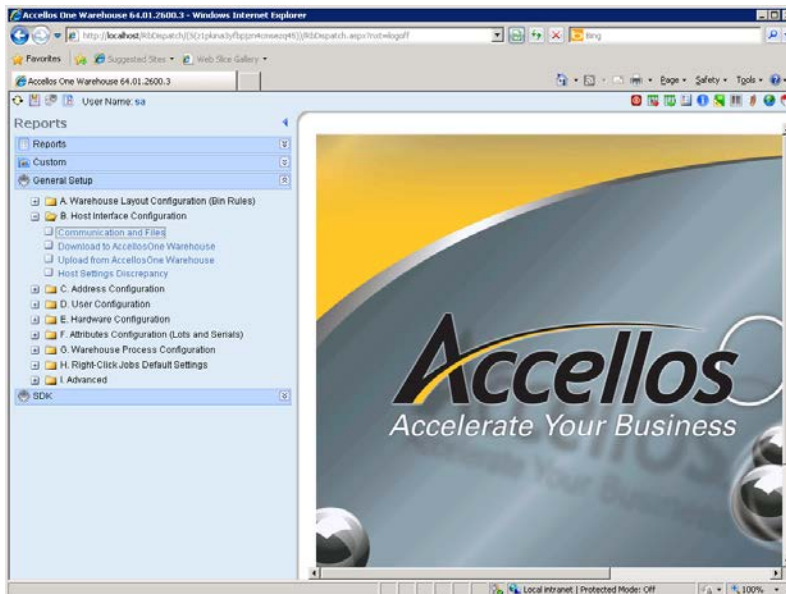
Setup Information

Setting up Accellos

For FACTS to communicate with Accellos about its items Accellos must be configured. These steps are specific to Version 6.4. Once Accellos is up and running, the method to receive FACTS ASCII files and the way in which the FACTS ASCII files will be named must be setup.

- 1 In Accellos, click the Reports 'arrow' to expand options.
- 2 Choose General setup.
- 3 Choose B. Host Interface Configuration
- 4 Click Communication and Files.

(Screen Capture Note: All screens may vary by version or user setup.)



- 5 The Communications and File Configuration screen contains two tabs: the General Features tab to specify the type of upload Accellos can expect, and the Flat File Settings to specify ASCII file names. On the General Tab, select Unknown for The Name of Your Host Accounting System (ERP).

Accellos One Warehouse 64.01.2600.3 - Windows Internet Explorer

Communications and Files Configuration

General features Flat File Settings

General features

The Name of Your Host Accounting System (ERP) UNKNOWN

DBF

Download from AccellosOne Warehouse DNLOAD Table

Upload to AccellosOne Warehouse UPLOAD Table

SQL

Download from External DNLOAD SQL table

External Download Table Name DNLOAD

Upload to External UPLOAD SQL table

External Upload Table Name UPLOAD

External Database Type Microsoft SQL Server

External Database Connection String

Download

Number of Purchase Orders to Download per Cycle

Number of Sales Orders to Download per Cycle

Number of Other Records to Download per Cycle

Upload

Number of Purchase Orders to Upload per File

Number of Purchase Orders to Upload per Cycle

Number of Sales Orders to Upload per File

Number of Sales Orders to Upload per Cycle

Backorders

Automatically Create Backorders for Purchase Orders that are Short Received

Automatically Create Backorders for Sales Orders that are Short Picked

Close Save

No other entries/selections are needed on the General Features tab.

- On the Flat File Settings tab, specify the ASCII file names and the upload and download (and if entered, archive) directories.
Any adjustments that Accellos will send back to FACTS must also be indicated.

The screenshot shows the 'Flat File Settings' configuration window. It is divided into two main sections: 'Download' and 'Upload'. Each section contains several input fields for specifying file names, extensions, and directories. There are also checkboxes for 'Separate Series of #s for Each Type of Upload' and 'Create a Separate File for the RMAs'. A 'Backorders' section is located at the bottom of the form.

Section	Field Name	Value
Download	Location/Directory to Read Download Files	.\download
	File Name for the Download Records	ORD*
	File Extension for the Download Records	TXT
	Location/Directory to save archive Download Files	.\
	File Name for the Renamed Download Files	ORD*
	File Extension for the Renamed Download Files	SAV
	Field Separator value	A
Upload	Location/Directory to Write Upload Files	.\upload
	Separate Series of #s for Each Type of Upload	<input checked="" type="checkbox"/>
	File Name for Pick Confirmation (PC) Records	PICK*
	File Extension for Pick Confirmation (PC) Records	TXT
	File Name for Receive Confirmation (RC) Records	RECV*
	File Extension for Receive Confirmation (RC) Records	TXT
	Create a Separate File for the RMAs	<input checked="" type="checkbox"/>
	File Name for RMA Confirmation (RC) Records	RMA_*
	Extension for RMA Confirmation (RC) Records	TXT
	File Name for Miscellaneous Transaction (MT) Records	MISC*
	Extension for Miscellaneous Transaction (MT) Records	TXT
	File Name for Stock Count (SC) Records	CYCNT*
	Extension for Stock Count (SC) Records	TXT
File Name for Transfer Confirmation (XC) Records	XFC*	
Extension for Transfer Confirmation (XC) Records	TXT	
Backorders	File Name for Backordered PH/PD SO Records	ORDB*
	File Extension for Backordered PH/PD SO Records	TXT

Accellos One Warehouse 64.01.2600.3 - Windows Internet Explorer

Communications and Files Configuration

General features Flat File Settings

Flat File Settings

Download

Location/Directory to Read Download Files: .\dnload

File Name for the Download Records: ORD*

File Extension for the Download Records: TXT

Location/Directory to save archive Download Files: \

File Name for the Renamed Download Files: ORD*

File Extension for the Renamed Download Files: SAV

Field Separator value: A

Upload

Location/Directory to Write Upload Files: .\upload

Separate Series of #s for Each Type of Upload:

File Name for Pick Confirmation (PC) Records: PICK*

File Extension for Pick Confirmation (PC) Records: TXT

File Name for Receive Confirmation (RC) Records: RECV*

File Extension for Receive Confirmation (RC) Records: TXT

Create a Separate File for the RMAs:

File Name for RMA Confirmation (RC) Records: RMA_*

Extension for RMA Confirmation (RC) Records: TXT

File Name for Miscellaneous Transaction (MT) Records: MISC*

Extension for Miscellaneous Transaction (MT) Records: TXT

File Name for Stock Count (SC) Records: CYCNT*

Extension for Stock Count (SC) Records: TXT

File Name for Transfer Confirmation (XC) Records: XFC*

Extension for Transfer Confirmation (XC) Records: TXT

Backorders

File Name for Backordered PH/PO SO Records: ORDB*

File Extension for Backordered PH/PO SO Records: TXT

Close Save

The ASCII file names entered on this screen are also entered into the FACTS WMS Control F/M (EWF990) program. Using an asterisk in the flat file settings allows Accellos to create files that are sequentially numbered. Note: the asterisk, if entered on this screen, may not be entered in WMS Control F/M. Use the Input Information to assist you with your entries in the three screen sections: Download, Upload, and Backorders.

Download Input Information

- The location/directory is created on the same server where Accellos is installed.
- The download records (sent to Accellos from FACTS) must begin with the characters entered, e.g. ORD* indicates that the download file must begin with ORD.
- The File Extension is the extension of the download file.
- The last field is the delimiter Accellos expects; it is also in FACTS.

Upload Input Information

- The location/directory is created on the same server where Accellos is installed.
- All other fields (except the checkboxes) are also in FACTS.

Backorder Input Information

- These fields are also in FACTS.

- 7 Return to the Accellos main screen and click the Reports 'arrow' to expand options.
- 8 Choose General setup.
- 9 Choose G. Warehouse Process Configuration.
- 10 Click Adjustments and complete the necessary settings.
 Only those switches that are enabled and also checked in the upload column is/are sent to FACTS. The switch column corresponds to the FACTS WMS Adjustment Interchange F/M (EWF960) program. It is possible to create new adjustment codes/switches in Accellos that, if sending back to FACTS, will also need to have a unique 2-character code created and entered in FACTS via PSO.)
 Other necessary settings are Accellos-specific, such as creating/setting bins, creating users, turning on logs/logging of upload/download files (if needed), setting up the scheduler for download/upload (to manual or start or auto), and so on.

is_enabled	switch	Vendor	customer	comment	Special 1	special2	special3	special4	special5	special6	upload
<input type="checkbox"/>	(BS) Borrowed Stock	<input type="checkbox"/>	<input type="checkbox"/>	<input type="checkbox"/>	<input type="checkbox"/>	<input type="checkbox"/>	<input type="checkbox"/>	<input type="checkbox"/>	<input type="checkbox"/>	<input type="checkbox"/>	<input type="checkbox"/>
<input checked="" type="checkbox"/>	(RC) Return / Customer	<input type="checkbox"/>	<input checked="" type="checkbox"/>	<input type="checkbox"/>	<input type="checkbox"/>	<input type="checkbox"/>	<input type="checkbox"/>	<input type="checkbox"/>	<input type="checkbox"/>	<input type="checkbox"/>	<input checked="" type="checkbox"/>
<input type="checkbox"/>	(DG) Damaged Goods	<input type="checkbox"/>	<input type="checkbox"/>	<input type="checkbox"/>	<input type="checkbox"/>	<input type="checkbox"/>	<input type="checkbox"/>	<input type="checkbox"/>	<input type="checkbox"/>	<input type="checkbox"/>	<input type="checkbox"/>
<input type="checkbox"/>	(DF) Damaged in Field	<input type="checkbox"/>	<input type="checkbox"/>	<input type="checkbox"/>	<input type="checkbox"/>	<input type="checkbox"/>	<input type="checkbox"/>	<input type="checkbox"/>	<input type="checkbox"/>	<input type="checkbox"/>	<input type="checkbox"/>
<input type="checkbox"/>	(DN) Donations	<input type="checkbox"/>	<input type="checkbox"/>	<input type="checkbox"/>	<input type="checkbox"/>	<input type="checkbox"/>	<input type="checkbox"/>	<input type="checkbox"/>	<input type="checkbox"/>	<input type="checkbox"/>	<input type="checkbox"/>
<input type="checkbox"/>	(FC) Front Counter	<input type="checkbox"/>	<input type="checkbox"/>	<input type="checkbox"/>	<input type="checkbox"/>	<input type="checkbox"/>	<input type="checkbox"/>	<input type="checkbox"/>	<input type="checkbox"/>	<input type="checkbox"/>	<input type="checkbox"/>
<input type="checkbox"/>	(IM) ADJ_IM	<input type="checkbox"/>	<input type="checkbox"/>	<input type="checkbox"/>	<input type="checkbox"/>	<input type="checkbox"/>	<input type="checkbox"/>	<input type="checkbox"/>	<input type="checkbox"/>	<input type="checkbox"/>	<input type="checkbox"/>
<input type="checkbox"/>	(IU) Internal Use	<input type="checkbox"/>	<input type="checkbox"/>	<input type="checkbox"/>	<input type="checkbox"/>	<input type="checkbox"/>	<input type="checkbox"/>	<input type="checkbox"/>	<input type="checkbox"/>	<input type="checkbox"/>	<input type="checkbox"/>
<input checked="" type="checkbox"/>	(RV) Non-PO Receipt	<input type="checkbox"/>	<input type="checkbox"/>	<input type="checkbox"/>	<input type="checkbox"/>	<input type="checkbox"/>	<input type="checkbox"/>	<input type="checkbox"/>	<input type="checkbox"/>	<input type="checkbox"/>	<input checked="" type="checkbox"/>
<input type="checkbox"/>	(PK) Packaging Materials	<input type="checkbox"/>	<input type="checkbox"/>	<input type="checkbox"/>	<input type="checkbox"/>	<input type="checkbox"/>	<input type="checkbox"/>	<input type="checkbox"/>	<input type="checkbox"/>	<input type="checkbox"/>	<input type="checkbox"/>
<input type="checkbox"/>	(PR) Promo Materials	<input type="checkbox"/>	<input type="checkbox"/>	<input type="checkbox"/>	<input type="checkbox"/>	<input type="checkbox"/>	<input type="checkbox"/>	<input type="checkbox"/>	<input type="checkbox"/>	<input type="checkbox"/>	<input type="checkbox"/>
<input type="checkbox"/>	(RE) Receiving Error	<input type="checkbox"/>	<input type="checkbox"/>	<input type="checkbox"/>	<input type="checkbox"/>	<input type="checkbox"/>	<input type="checkbox"/>	<input type="checkbox"/>	<input type="checkbox"/>	<input type="checkbox"/>	<input type="checkbox"/>
<input type="checkbox"/>	(RP) Repairs	<input type="checkbox"/>	<input type="checkbox"/>	<input type="checkbox"/>	<input type="checkbox"/>	<input type="checkbox"/>	<input type="checkbox"/>	<input type="checkbox"/>	<input type="checkbox"/>	<input type="checkbox"/>	<input type="checkbox"/>
<input type="checkbox"/>	(RM) RMA	<input type="checkbox"/>	<input type="checkbox"/>	<input type="checkbox"/>	<input type="checkbox"/>	<input type="checkbox"/>	<input type="checkbox"/>	<input type="checkbox"/>	<input type="checkbox"/>	<input type="checkbox"/>	<input type="checkbox"/>
<input checked="" type="checkbox"/>	(MA) Misc Adjustment	<input type="checkbox"/>	<input type="checkbox"/>	<input type="checkbox"/>	<input type="checkbox"/>	<input type="checkbox"/>	<input type="checkbox"/>	<input type="checkbox"/>	<input type="checkbox"/>	<input type="checkbox"/>	<input checked="" type="checkbox"/>
<input type="checkbox"/>	(SU) Supplies	<input type="checkbox"/>	<input type="checkbox"/>	<input type="checkbox"/>	<input type="checkbox"/>	<input type="checkbox"/>	<input type="checkbox"/>	<input type="checkbox"/>	<input type="checkbox"/>	<input type="checkbox"/>	<input type="checkbox"/>
<input checked="" type="checkbox"/>	(VR) Return / Vendor	<input checked="" type="checkbox"/>	<input type="checkbox"/>	<input type="checkbox"/>	<input type="checkbox"/>	<input type="checkbox"/>	<input type="checkbox"/>	<input type="checkbox"/>	<input type="checkbox"/>	<input type="checkbox"/>	<input checked="" type="checkbox"/>
<input type="checkbox"/>	(TR) Transfers	<input type="checkbox"/>	<input type="checkbox"/>	<input type="checkbox"/>	<input type="checkbox"/>	<input type="checkbox"/>	<input type="checkbox"/>	<input type="checkbox"/>	<input type="checkbox"/>	<input type="checkbox"/>	<input type="checkbox"/>
<input type="checkbox"/>	(WP) Work in Progress	<input type="checkbox"/>	<input type="checkbox"/>	<input type="checkbox"/>	<input type="checkbox"/>	<input type="checkbox"/>	<input type="checkbox"/>	<input type="checkbox"/>	<input type="checkbox"/>	<input type="checkbox"/>	<input type="checkbox"/>
<input type="checkbox"/>	(KA) ADJ_KA	<input type="checkbox"/>	<input type="checkbox"/>	<input type="checkbox"/>	<input type="checkbox"/>	<input type="checkbox"/>	<input type="checkbox"/>	<input type="checkbox"/>	<input type="checkbox"/>	<input type="checkbox"/>	<input type="checkbox"/>
<input type="checkbox"/>	(QI) Quality Inspection	<input type="checkbox"/>	<input type="checkbox"/>	<input type="checkbox"/>	<input type="checkbox"/>	<input type="checkbox"/>	<input type="checkbox"/>	<input type="checkbox"/>	<input type="checkbox"/>	<input type="checkbox"/>	<input type="checkbox"/>

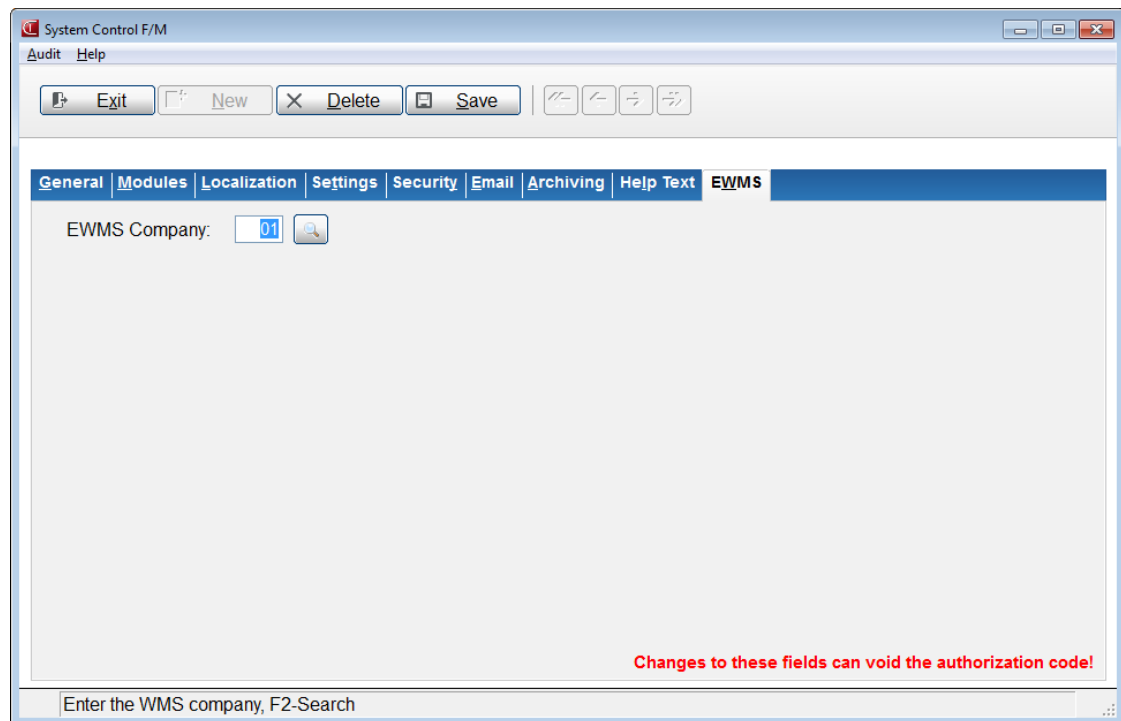
Setting up FACTS

For FACTS to use EWMS the optional EW module must be used. If the EW module is not available on your system, you may not have the options discussed in this section.

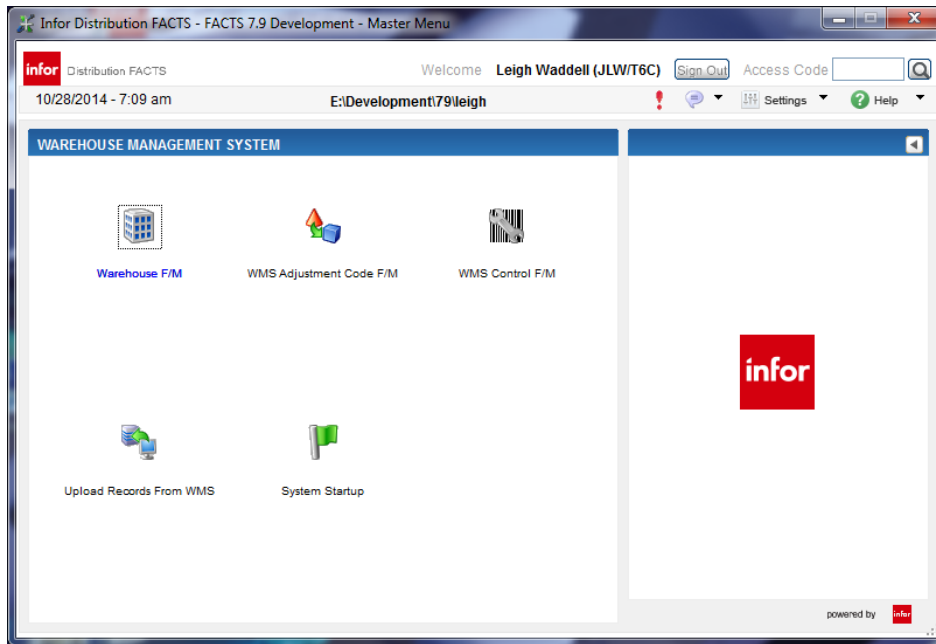
Configuring EWMS in FACTS

Complete the following steps in the FACTS programs listed to setup the EW module.

- 1 Access System Control F/M (SMF950) and specify the company being used to process EWMS.

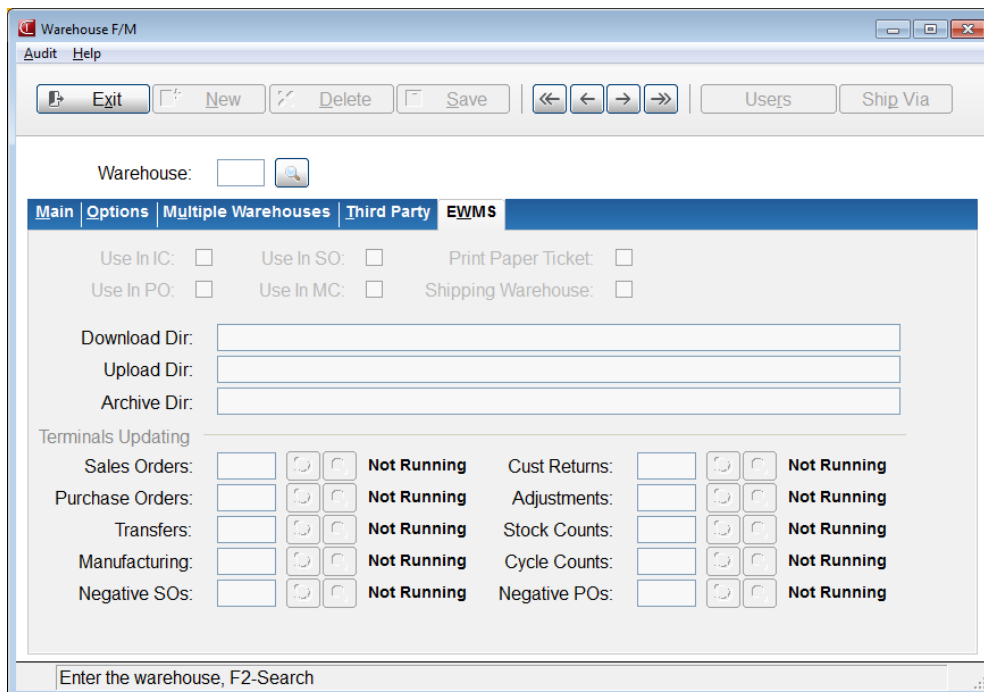


2 Access the Warehouse Management System menu to view the following:



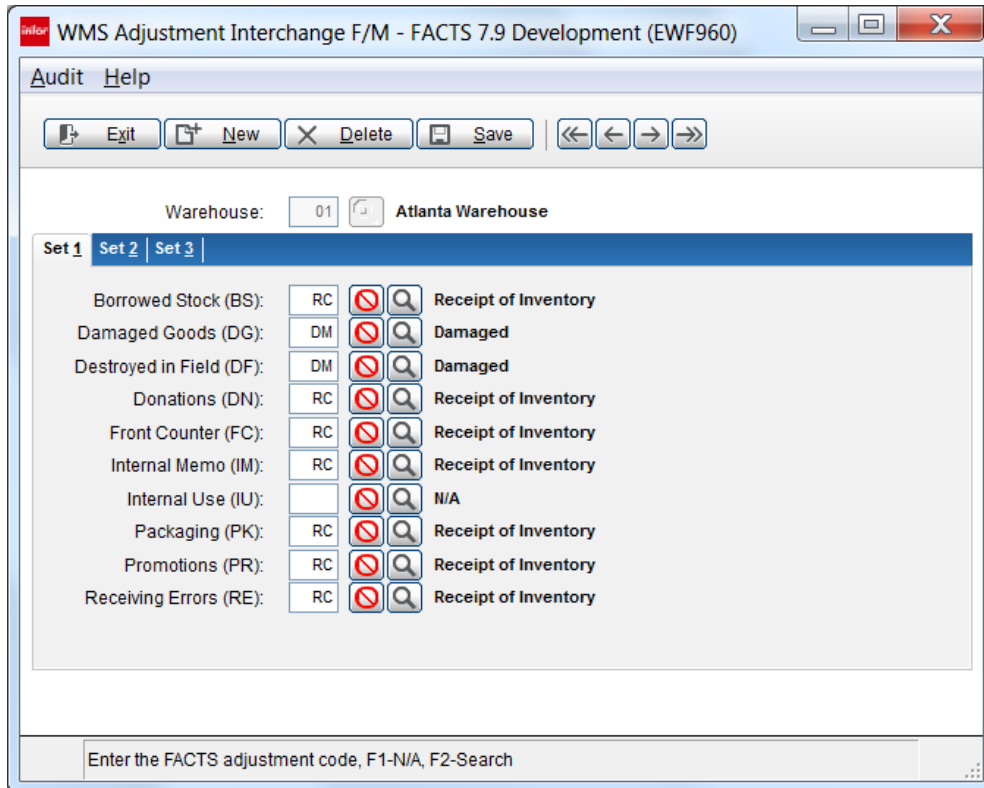
3 If you have not created the WMS Control “EWN” record do so now in WMS Control F/M (EWF990). If WMS Control F/M has been completed, proceed to step 4.

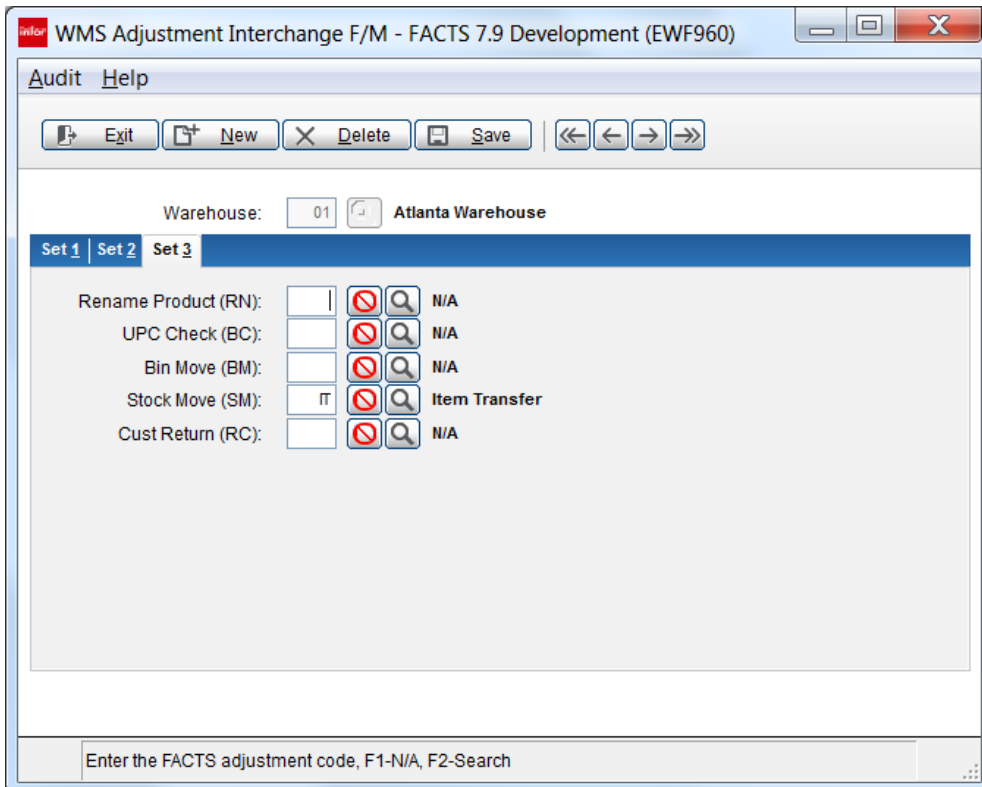
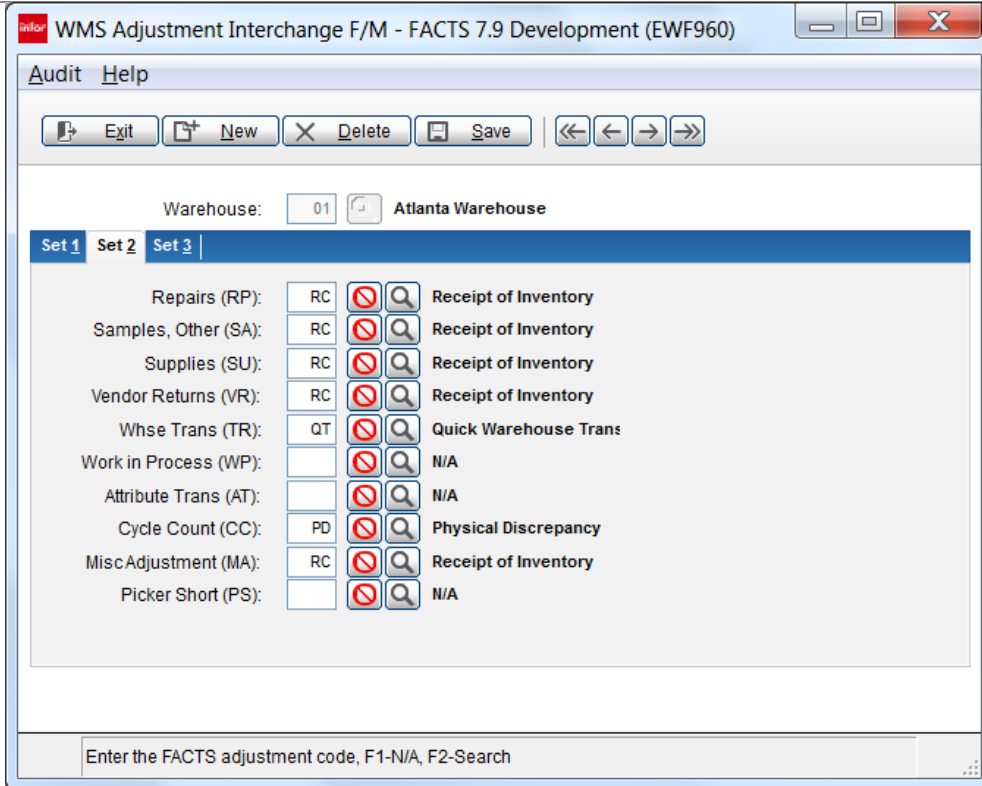
4 Access Warehouse F/M (ICF970).



5 Select the appropriate check boxes and specify the Download, Upload, Archive (as needed) directories. (Be sure to create, in advance, the directories you specify, using the desired locations and naming conventions.)

- 6 (Optional) If using a file transfer program, configure it now to interact with the created directories, sending files in the download directory of FACTS to the download directory of Accellos and retrieving upload files from the Accellos upload directory and placing them in the upload directory of FACTS.
- 7 Access WMS Adjustment Interchange F/M (EWF960).

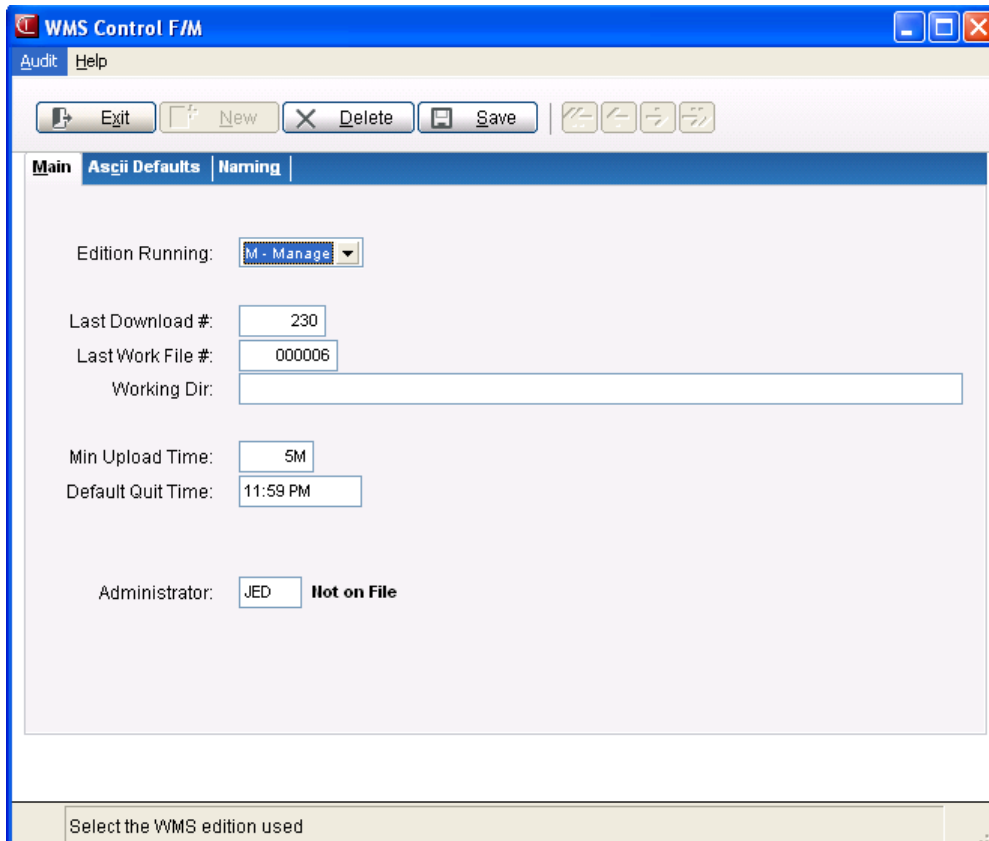




- Specify the codes on the Set 1, Set 2, and Set 3 tabs. The codes entered in this program are created in IC in the Adjustment Code F/M (ICF960) program. The codes entered in WMS Adjustment Interchange F/M correspond to the codes

entered into Accellos Warehouse Process Configuration > Adjustment Settings that are enabled (“is_enabled” is checked) and checked for Upload. (See Setting up Accellos, page 13).

- 9 Access the WMS Control F/M (EWF990). View the FACTS help documentation to determine entry options (if unfamiliar with these fields).




WMS Control F/M

Audit Help

Exit New Delete Save

Main Ascii Defaults **Naming**

Vendor:  **General Industrial MFG**

PP Freight:

Ignore Adjustments:

Use Fixed UM:

Use Auto Invoice:

Send Pack Sizes:

CRS No Changes:

CRS Changes:

EOL Character:

Field Delimiter:

Enter the default vendor for non-PO receipts, F2-Search

WMS Control F/M - FACTS 7.9 Development (EWF990)

Audit Help

Exit New Delete Save

Main Ascii Defaults **Naming**

File Names here must correspond to entries in Accellos.
Asterisks entered into Accellos are not needed here.

Download File Name

File Name for Download Records: Ext:

Upload File Name

Pick Confirmation (PC) Records: Ext:

Receive Confirmation (RC) Records: Ext:

RMA Confirmation (RMA) Records: Ext:

Miscellaneous Confirmation (MT) Records: Ext:

Stock Count (SC) Records: Ext:

Transfer Confirmation (XC) Records: Ext:

Backorder File Name

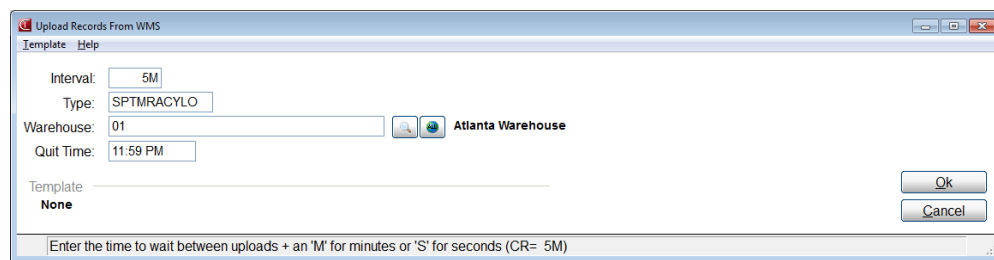
Backordered PH/PO SO Records: Ext:

Enter the download record file name

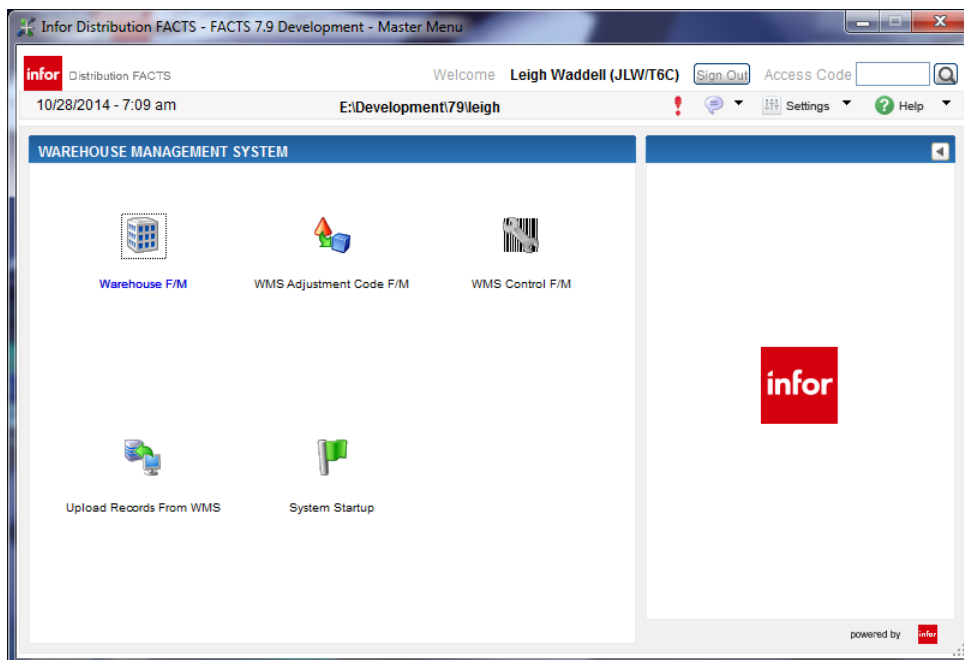
- 10** Check your settings. It is extremely important that you enter the same delimiter information in FACTS as in Accellos for the integration to work successfully. The ASCII file names (without asterisk) and file extensions (entered with the leading 'period') must also be the same in FACTS as entered in Accellos.

Make sure Accellos is configured and running, and, if using a file transfer program that it is already configured and running. Make sure all FACTS setup steps are complete.

- 11** Access Upload Records from WMS (EWU110). This program begins the monitoring process of FACTS' upload directory for ASCII files to process. If files exist, they are read. If status files exist they will update the EWMS ledger file and the ASCII file will be archived. Non-status files (those that actually change inventory in some way) will have their contents written to the holding files. The ASCII file is archived and then the holding files will update the FACTS files as necessary, records being removed from the holding files as they successfully interact with FACTS.



- 12** Select System Startup and the right hand menu will display the options to run in order. Processing these programs will populate Accellos with FACTS data. Processing these programs on the Accellos server may require additional information to be entered as Accellos receives/reads-in the data. Having an Accellos certified representative available to assist you is advisable.



- 13** This completes the FACTS/Accellos integration. Your inventory is now maintained through Accellos.

System Startup

Create Item Download

When creating the Item Download, if the Quantities option is selected, the Accellos system is going to attempt to match the FACTS locations with the proper BIN. If the BIN is not setup, the items will be in an external location.

PO, SO, Transfers or CRS Download

If the document hasn't been printed, the document will not be sent to Accellos.

Standard Part Numbers

Only UPCs are sent to Accellos.

Import Locations

Accellos supports up to 8 characters for a BIN location where as FACTS only supports up to 6 characters. Any BIN location that is being uploaded that is more than 6 characters will be ignored.